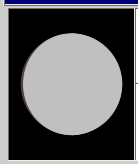
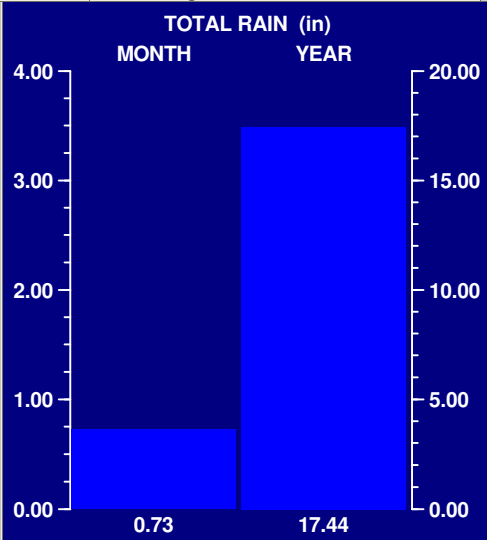
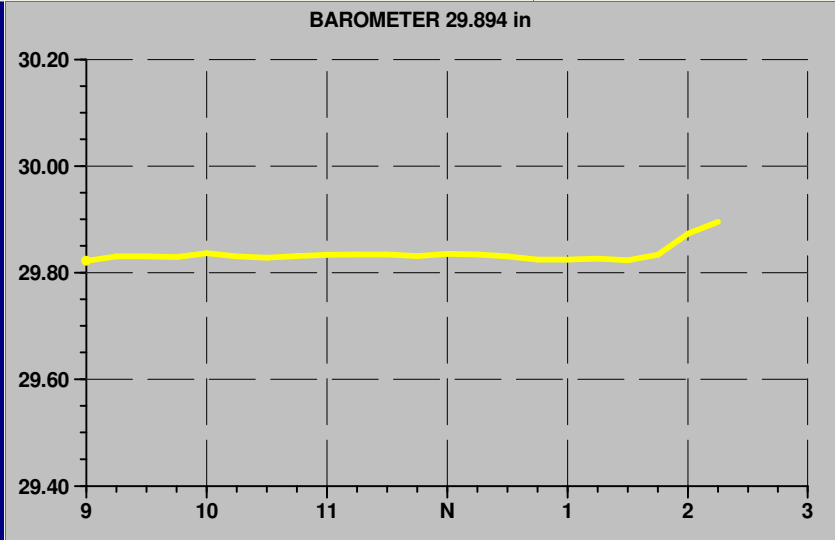
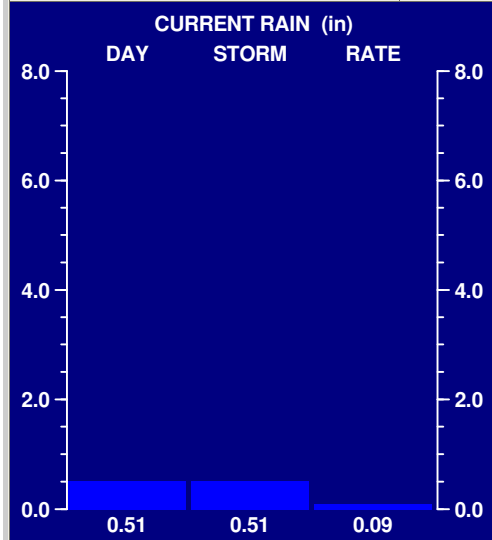
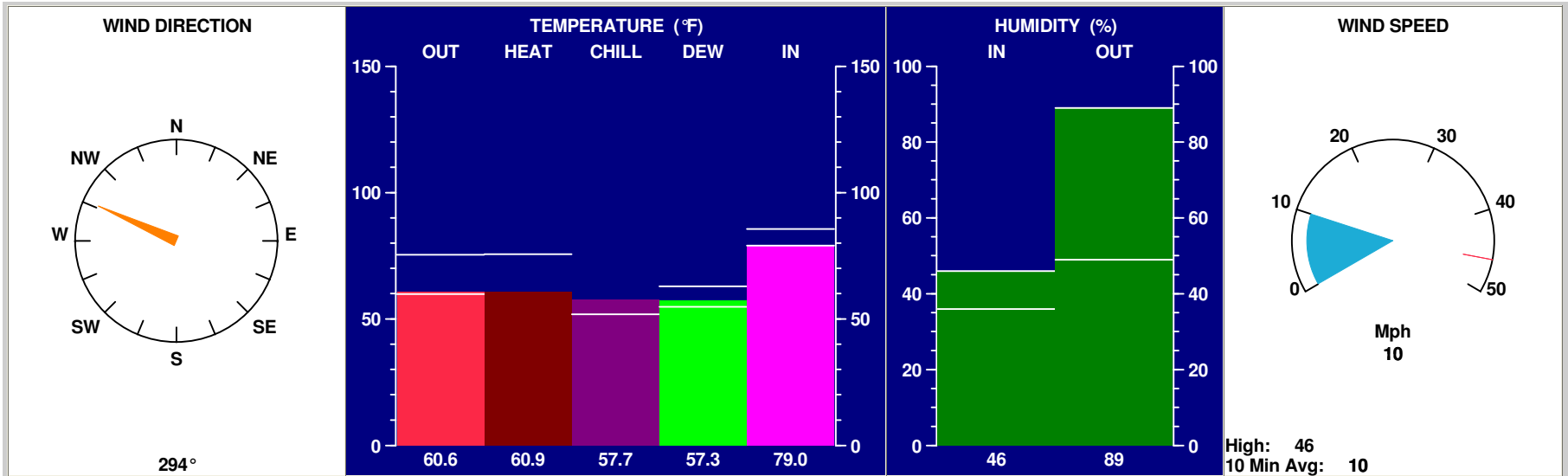
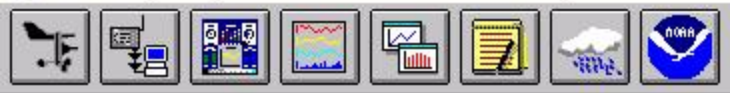


Vantage Bulletin
 07/13/11 521 Newell St 2:25p

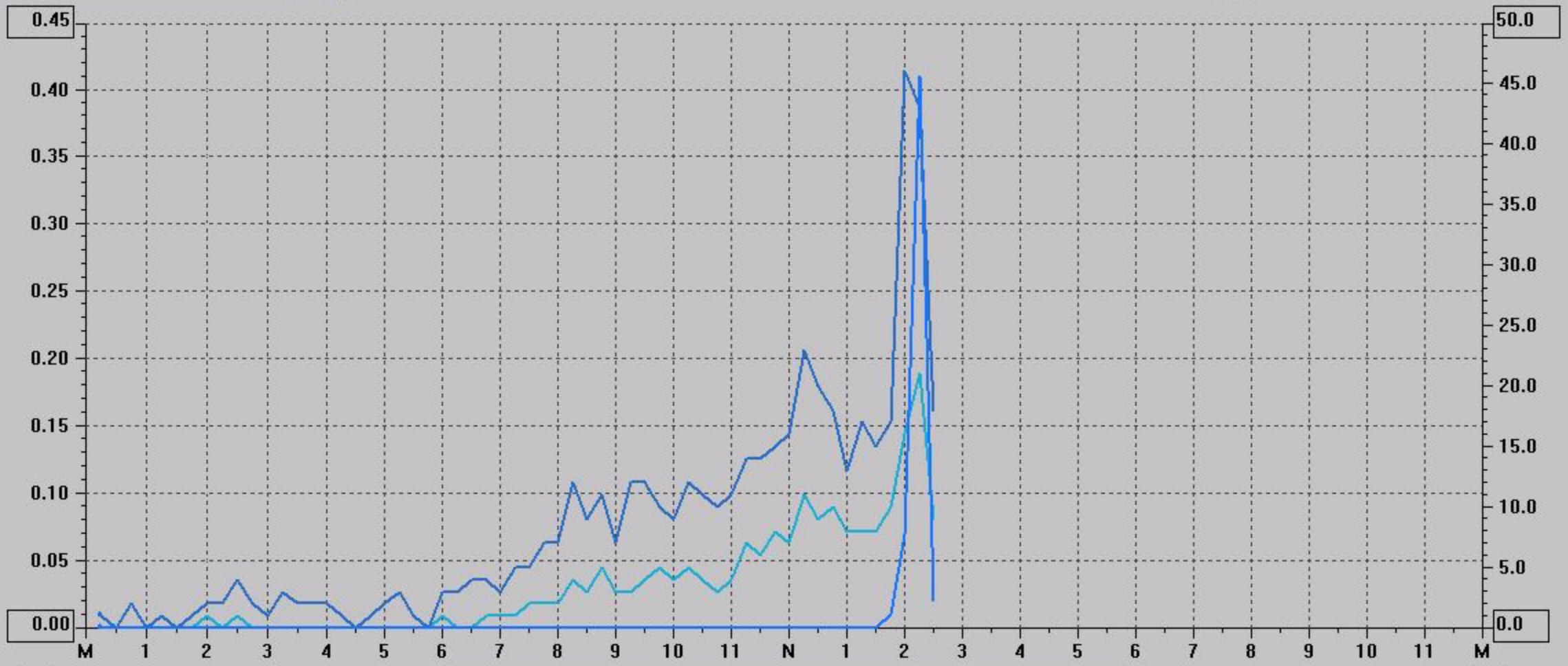


Sunrise: 5:33a Sunset: 8:45p

Partly cloudy and cooler.

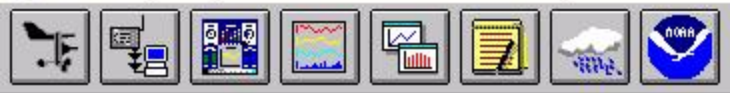


Day [Zoom in icon] [Zoom out icon] [Weather icon]



Wed Jul 13, 2011

- Outside Temp
- Wind Run
- Rain
- Hi Temp
- Hi Wind Speed
- Rain Rate
- Low Temp
- Hi Wind Dir
- Heating DD
- Out Humidity
- Wind Chill
- Cooling DD
- Dewpoint
- Heat Index
- Inside Temp
- Wind Speed
- THW Index
- Inside Humidity
- Wind Direction
- Barometer
- Inside Dewpoint



Zoom controls: + 4 Hours -



- Outside Temp
- Wind Run
- Rain
- Hi Temp
- Hi Wind Speed
- Rain Rate
- Low Temp
- Hi Wind Dir
- Heating DD
- Out Humidity
- Wind Chill
- Cooling DD
- Dewpoint
- Heat Index
- Inside Temp
- Wind Speed
- THW Index
- Inside Humidity
- Wind Direction
- Barometer
- Inside Dewpoint

MONTHLY CLIMATOLOGICAL SUMMARY for JUL. 2011

NAME: 521 Newell St CITY: Watertown STATE: New York
 ELEV: 447 ft LAT: 43° 58' 52" N LONG: 75° 54' 07" W

TEMPERATURE (°F), RAIN (in), WIND SPEED (mph)

DAY	MEAN TEMP	HIGH	TIME	LOW	TIME	HEAT DEG DAYS	COOL DEG DAYS	RAIN	AVG WIND SPEED	HIGH	TIME	DOM DIR
1	68.5	78.2	4:00p	58.3	4:15a	1.4	4.9	0.00	3.1	20.0	7:00p	WSW
2	73.8	84.3	4:00p	57.1	5:45a	1.4	10.2	0.00	3.5	18.0	3:15p	SE
3	74.4	80.9	2:30p	68.9	6:30a	0.0	9.4	0.03	5.8	33.0	3:45a	S
4	71.3	79.5	4:00p	63.9	6:15a	0.1	6.3	0.00	5.9	20.0	5:15p	S
5	71.2	80.5	5:00p	61.9	4:30a	0.5	6.6	0.00	5.1	23.0	12:45p	SSE
6	73.0	80.2	11:00a	68.3	3:30p	0.0	8.0	0.19	6.9	30.0	11:00a	SSW
7	70.3	78.2	3:00p	61.2	5:45a	0.4	5.6	0.00	2.4	15.0	10:00a	N
8	73.9	85.4	3:30p	59.6	5:45a	0.7	9.6	0.00	2.2	19.0	11:45p	E
9	67.2	79.1	4:45p	58.0	5:45a	1.3	3.5	0.00	4.0	20.0	12:15a	N
10	74.4	83.9	3:45p	61.8	2:30a	0.4	9.8	0.00	4.5	23.0	3:00p	SSE
11	80.3	89.5	4:00p	74.5	5:00a	0.0	15.3	0.00	5.0	25.0	3:15p	S
12	76.4	83.7	5:15p	71.4	6:00a	0.0	11.4	0.00	7.6	28.0	4:30p	SW
13	69.6	75.4	1:15p	59.9	2:15p	0.1	2.9	0.51	3.4	46.0	2:00p	N
14												
15												
16												
17												
18												
19												
20												
21												
22												
23												
24												
25												
26												
27												
28												
29												
30												
31												

	72.6	89.5	11	57.1	2	6.3	103.5	0.73	4.6	46.0	13	SSW

Max >= 90.0: 0
 Max <= 32.0: 0
 Min <= 32.0: 0
 Min <= 0.0: 0

Max Rain: 0.51 ON 07/13/11

Days of Rain: 3 (>.01 in) 2 (>.1 in) 0 (>1 in)

Heat Base: 65.0 Cool Base: 65.0 Method: Integration