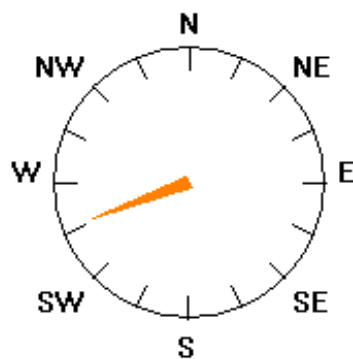


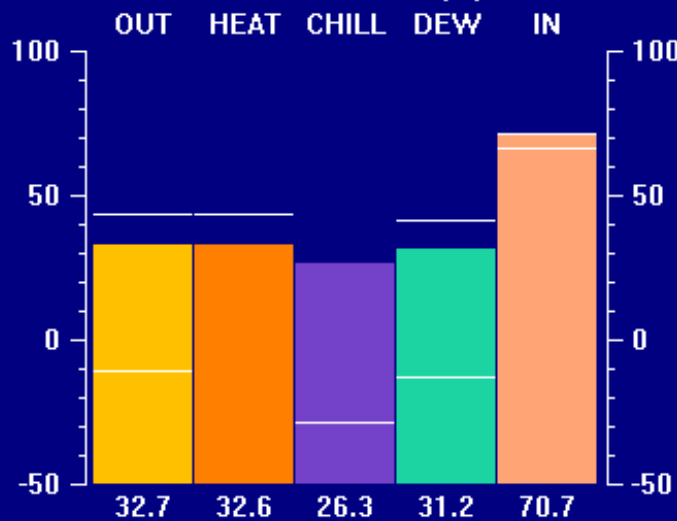


WIND DIRECTION

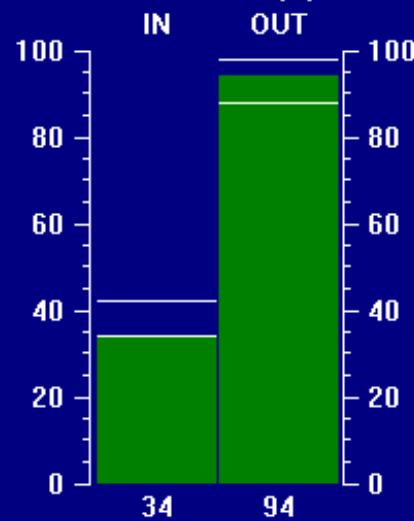


250°

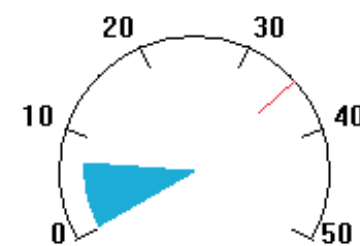
TEMPERATURE (°F)



HUMIDITY (%)



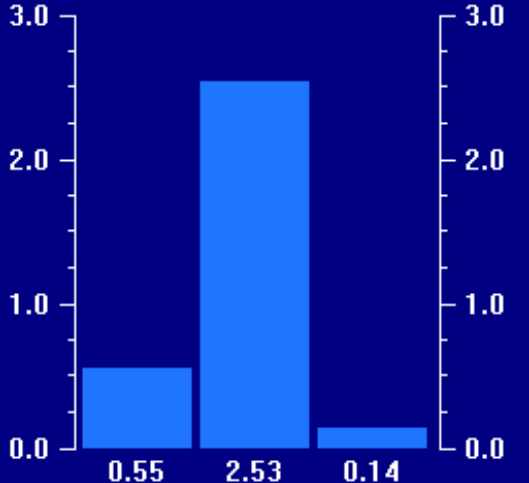
WIND SPEED



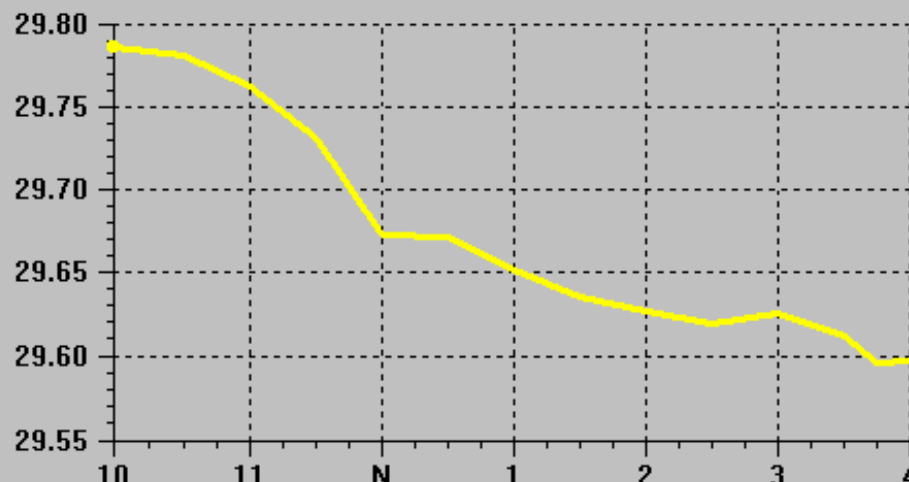
Mph
7

High: 35
10 Min Avg: 7

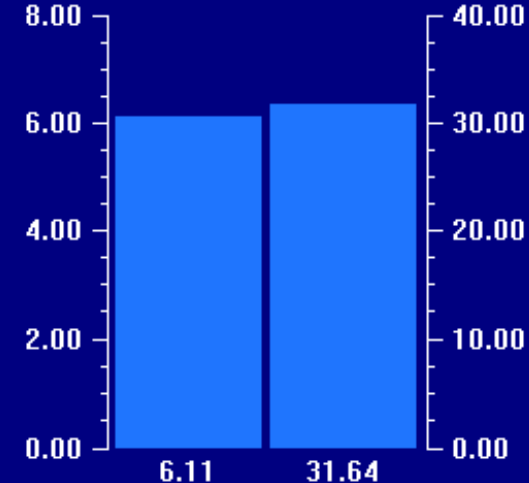
CURRENT RAIN (in)



BAROMETER 29.596 in



TOTAL RAIN (in)



Sunrise: 7:35a

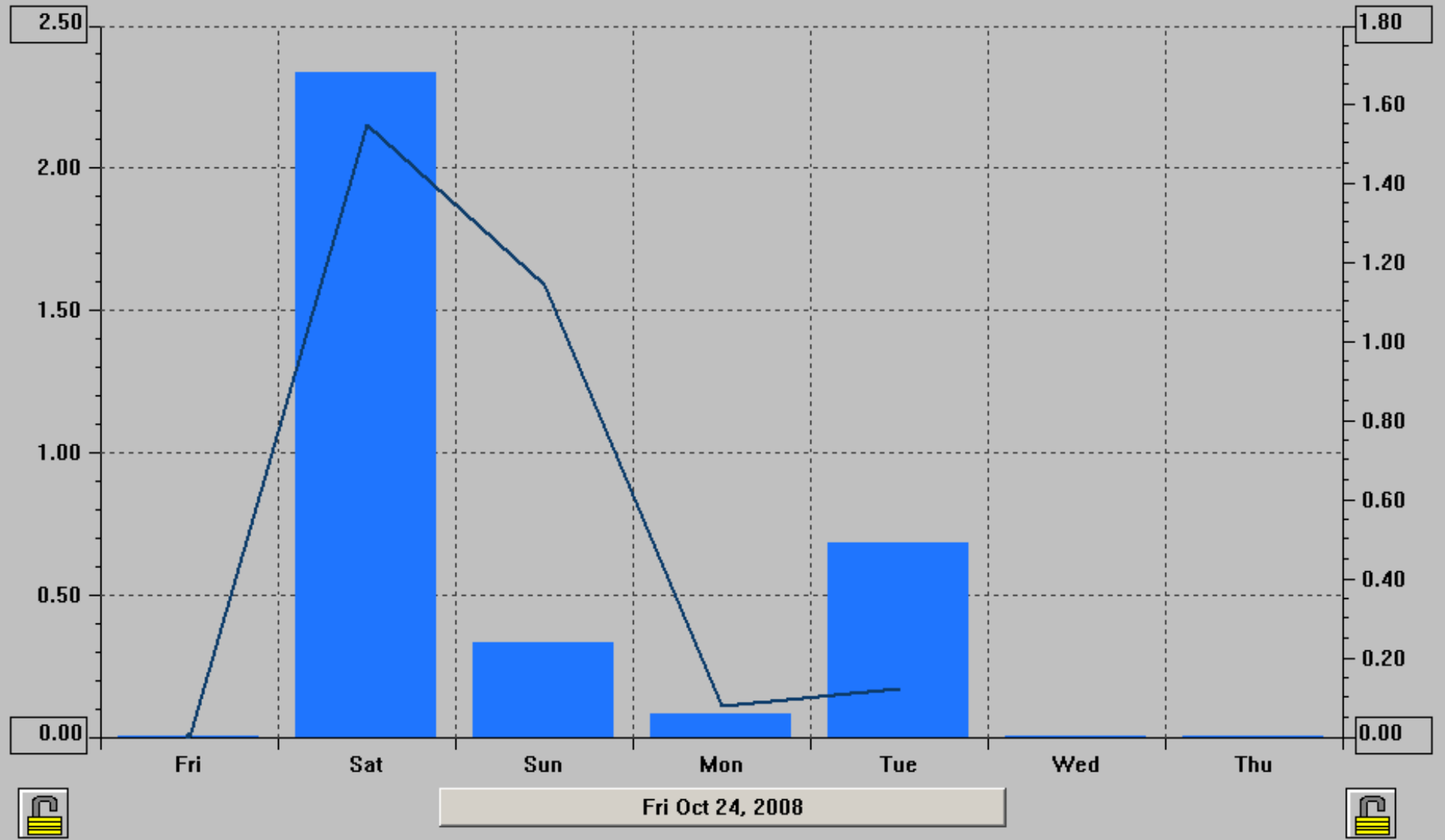
Sunset: 5:59p

Mostly cloudy and cooler. Precipitation continuing. Windy.

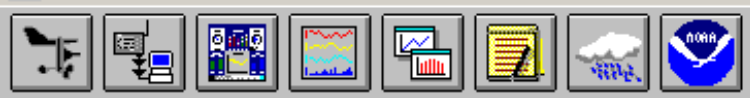




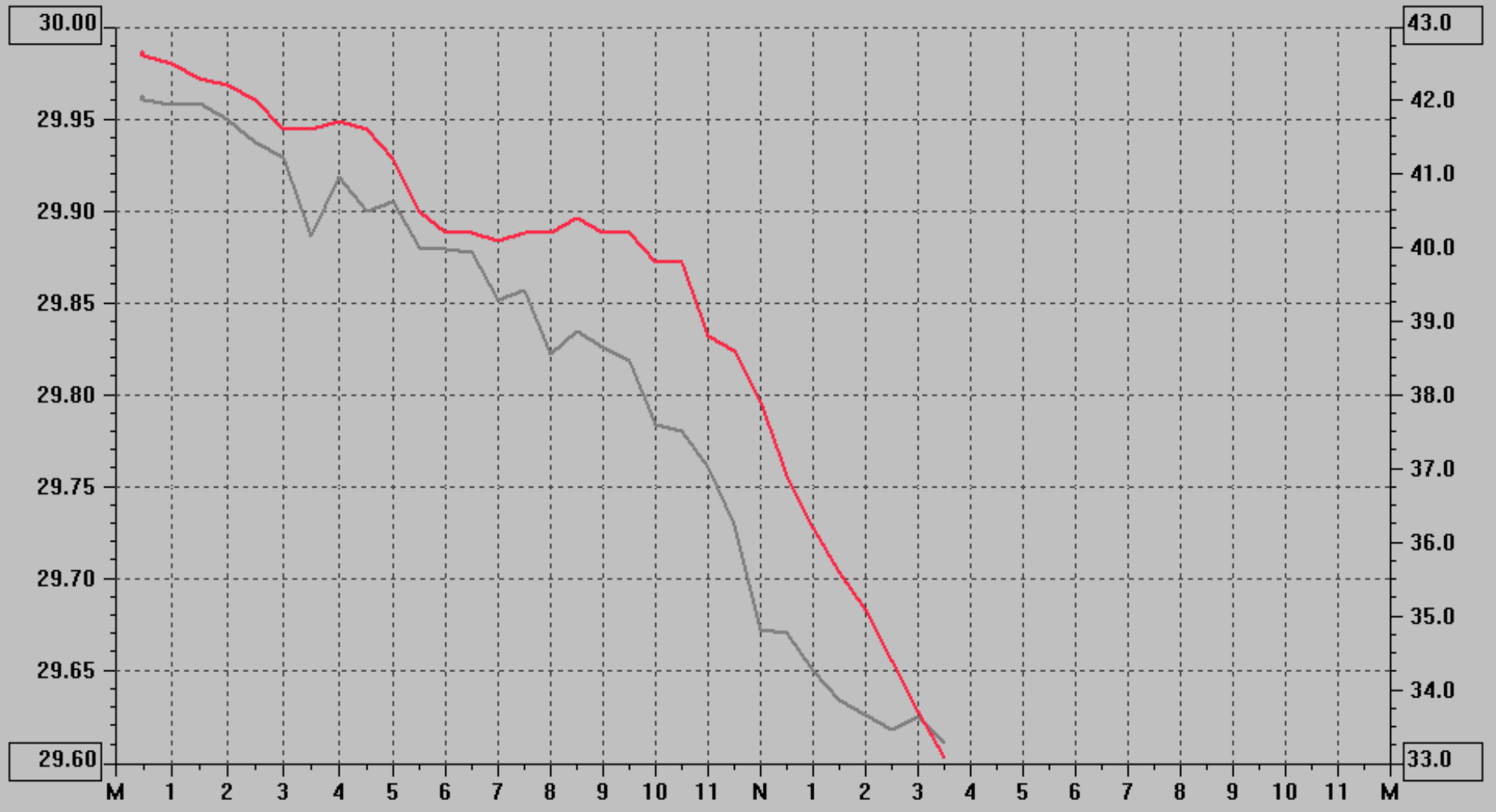
Zoom controls: + Week - [Color selection icon]



- Outside Temp
- Hi Temp
- Low Temp
- Out Humidity
- Dewpoint
- Wind Speed
- Wind Direction
- Wind Run
- Hi Wind Speed
- Hi Wind Dir
- Wind Chill
- Heat Index
- THW Index
- Barometer
- Rain
- Rain Rate
- Heating DD
- Cooling DD
- Inside Temp
- Inside Humidity
- Inside Dewpoint



Day [Zoom In] [Zoom Out] [Color Picker]



Tue Oct 28, 2008

- Outside Temp
- Hi Temp
- Low Temp
- Out Humidity
- Dewpoint
- Wind Speed
- Wind Direction
- Wind Run
- Hi Wind Speed
- Hi Wind Dir
- Wind Chill
- Heat Index
- THW Index
- Barometer
- Rain
- Rain Rate
- Heating DD
- Cooling DD
- Inside Temp
- Inside Humidity
- Inside Dewpoint

Date	Time	Temp Out	Hi Temp	Low Temp	Out Hum	Dew Pt.	Wind Speed	Wind Dir	Wind Run	Hi Speed	Hi Dir	Wind Chill	Heat Index	THW Index	Bar	Rain	Rain Rate	Heat D-D	Cool D-D
10/28/08	12:30a	42.6	42.9	42.6	88	39.3	0.0	N	0.00	3.0	N	42.6	42.5	42.5	29.960	0.00	0.00	0.467	0.000
10/28/08	1:00a	42.5	42.6	42.5	88	39.2	1.0	N	0.50	4.0	N	42.5	42.4	42.4	29.957	0.00	0.00	0.469	0.000
10/28/08	1:30a	42.3	42.5	42.3	88	39.0	1.0	N	0.50	5.0	N	42.3	42.2	42.2	29.958	0.00	0.00	0.473	0.000
10/28/08	2:00a	42.2	42.4	42.2	89	39.2	2.0	N	1.00	5.0	N	42.2	42.2	42.2	29.949	0.00	0.00	0.475	0.000
10/28/08	2:30a	42.0	42.2	42.0	90	39.3	1.0	NE	0.50	6.0	NNE	42.0	42.0	42.0	29.937	0.00	0.00	0.479	0.000
10/28/08	3:00a	41.6	42.1	41.6	91	39.2	3.0	N	1.50	11.0	N	40.2	41.6	40.2	29.929	0.00	0.00	0.488	0.000
10/28/08	3:30a	41.6	41.7	41.6	92	39.4	4.0	N	2.00	13.0	N	39.2	41.6	39.2	29.886	0.00	0.00	0.488	0.000
10/28/08	4:00a	41.7	41.7	41.6	92	39.5	4.0	N	2.00	10.0	N	39.3	41.7	39.3	29.918	0.00	0.00	0.485	0.000
10/28/08	4:30a	41.6	41.8	41.6	92	39.4	3.0	N	1.50	10.0	NNE	40.2	41.6	40.2	29.900	0.01	0.00	0.488	0.000
10/28/08	5:00a	41.2	41.6	41.2	93	39.3	3.0	NNW	1.50	13.0	NW	39.7	41.2	39.7	29.905	0.01	0.00	0.496	0.000
10/28/08	5:30a	40.5	41.2	40.5	93	38.6	6.0	NW	3.00	18.0	NW	36.3	40.5	36.3	29.880	0.02	0.00	0.510	0.000
10/28/08	6:00a	40.2	40.5	40.2	92	38.1	7.0	NW	3.50	17.0	NNW	35.3	40.2	35.3	29.879	0.01	0.00	0.517	0.000
10/28/08	6:30a	40.2	40.3	40.1	92	38.1	6.0	NNW	3.00	16.0	NNE	36.0	40.2	36.0	29.877	0.01	0.00	0.517	0.000
10/28/08	7:00a	40.1	40.3	40.1	92	38.0	6.0	NNW	3.00	17.0	NNW	35.9	40.1	35.9	29.852	0.01	0.00	0.519	0.000
10/28/08	7:30a	40.2	40.2	40.1	92	38.1	6.0	NW	3.00	18.0	NW	36.0	40.2	36.0	29.857	0.02	0.04	0.517	0.000
10/28/08	8:00a	40.2	40.2	40.1	92	38.1	7.0	NW	3.50	20.0	NNW	35.3	40.2	35.3	29.822	0.02	0.06	0.517	0.000
10/28/08	8:30a	40.4	41.9	40.2	92	38.3	8.0	NW	4.00	22.0	NNW	35.1	40.4	35.1	29.835	0.03	0.07	0.512	0.000
10/28/08	9:00a	40.2	41.1	40.2	91	37.8	9.0	NW	4.50	21.0	NNW	34.3	40.1	34.2	29.826	0.03	0.07	0.517	0.000
10/28/08	9:30a	40.2	40.4	-11.0	91	37.8	9.0	NW	4.50	23.0	NNW	34.3	40.1	34.2	29.819	0.02	0.05	0.517	0.000
10/28/08	10:00a	39.8	40.2	39.8	91	37.4	10.0	NW	5.00	22.0	NW	33.4	39.7	33.3	29.784	0.03	0.07	0.525	0.000
10/28/08	10:30a	39.8	40.1	-9.3	90	37.1	11.0	NW	5.50	27.0	NW	33.0	39.7	32.9	29.780	0.02	0.07	0.525	0.000
10/28/08	11:00a	38.8	39.8	38.8	90	36.1	14.0	WNW	7.00	27.0	WNW	30.6	38.7	30.5	29.761	0.02	0.05	0.546	0.000
10/28/08	11:30a	38.6	39.7	38.6	90	35.9	15.0	NW	7.50	29.0	NNW	30.0	38.5	29.9	29.730	0.01	0.04	0.550	0.000
10/28/08	12:00p	37.9	39.4	37.9	90	35.2	15.0	WNW	7.50	33.0	WNW	29.1	37.8	29.0	29.673	0.02	0.00	0.565	0.000
10/28/08	12:30p	36.9	37.9	36.9	90	34.2	15.0	WNW	7.50	30.0	WNW	27.9	36.8	27.8	29.671	0.02	0.06	0.585	0.000
10/28/08	1:00p	36.2	36.9	36.2	91	33.8	15.0	WNW	7.50	35.0	NNW	27.0	36.1	26.9	29.651	0.02	0.04	0.600	0.000
10/28/08	1:30p	35.6	36.2	35.6	91	33.2	16.0	WNW	8.00	33.0	WNW	25.9	35.5	25.8	29.635	0.02	0.04	0.613	0.000
10/28/08	2:00p	35.1	35.6	35.1	91	32.7	13.0	WNW	6.50	29.0	NW	26.3	35.0	26.2	29.627	0.02	0.04	0.623	0.000
10/28/08	2:30p	34.4	35.4	34.4	92	32.3	13.0	WNW	6.50	25.0	WNW	25.4	34.3	25.3	29.619	0.03	0.07	0.637	0.000
10/28/08	3:00p	33.7	34.4	33.7	93	31.9	9.0	W	4.50	20.0	WSW	26.3	33.6	26.2	29.626	0.04	0.07	0.652	0.000
10/28/08	3:30p	33.1	33.7	33.0	94	31.6	7.0	W	3.50	13.0	W	26.8	33.0	26.7	29.612	0.05	0.17	0.665	0.000

Date	Time	In Temp	In Hum	In Dew	In Heat	Wind Samp	Wind Tx	ISS Receipt	Arc. Int.
10/28/08	12:30a	68.9	40	43.6	66.5	648	1	94.7	30
10/28/08	1:00a	70.2	39	44.1	67.5	647	1	94.6	30
10/28/08	1:30a	69.7	38	42.9	66.9	641	1	93.7	30
10/28/08	2:00a	68.9	39	42.9	66.4	640	1	93.6	30
10/28/08	2:30a	68.2	39	42.3	65.7	647	1	94.6	30
10/28/08	3:00a	67.5	39	41.7	64.9	646	1	94.4	30
10/28/08	3:30a	66.9	40	41.8	64.4	640	1	93.6	30
10/28/08	4:00a	67.5	41	43.0	65.2	645	1	94.3	30
10/28/08	4:30a	69.7	40	44.3	67.1	642	1	93.9	30
10/28/08	5:00a	69.4	39	43.4	66.8	637	1	93.1	30
10/28/08	5:30a	68.7	39	42.7	66.2	649	1	94.9	30
10/28/08	6:00a	67.9	39	42.0	65.4	638	1	93.3	30
10/28/08	6:30a	67.2	40	42.0	64.7	637	1	93.1	30
10/28/08	7:00a	66.7	40	41.6	64.2	640	1	93.6	30
10/28/08	7:30a	66.2	40	41.2	63.6	639	1	93.4	30
10/28/08	8:00a	67.9	41	43.3	65.6	632	1	92.4	30
10/28/08	8:30a	70.1	39	44.0	67.4	646	1	94.4	30
10/28/08	9:00a	70.1	38	43.3	67.3	649	1	94.9	30
10/28/08	9:30a	69.4	38	42.7	66.7	639	1	93.4	30
10/28/08	10:00a	68.9	38	42.2	66.3	640	1	93.6	30
10/28/08	10:30a	68.4	38	41.8	65.8	629	1	92.0	30
10/28/08	11:00a	67.9	38	41.3	65.3	644	1	94.2	30
10/28/08	11:30a	67.4	38	40.9	64.7	638	1	93.3	30
10/28/08	12:00p	68.9	38	42.2	66.3	656	1	95.9	30
10/28/08	12:30p	70.4	37	42.9	67.6	648	1	94.7	30
10/28/08	1:00p	70.1	36	41.9	67.1	663	1	96.9	30
10/28/08	1:30p	69.4	35	40.5	66.4	663	1	96.9	30
10/28/08	2:00p	68.5	35	39.8	65.5	655	1	95.8	30
10/28/08	2:30p	68.0	35	39.3	65.0	659	1	96.3	30
10/28/08	3:00p	69.9	35	41.0	66.8	650	1	95.0	30
10/28/08	3:30p	71.4	34	41.6	68.7	650	1	95.0	30